



inergy^o
inergy Technology Inc.

廣閱科技 股份有限公司

An integrated solutions provider
specializing in IC-to-system design.

Speaker : Dr. John Lin

Mar 20, 2026

Disclaimer

- This presentation and its accompanying announcements contain forward-looking statements derived from both internal and external sources. These statements include, but are not limited to, the Company's operational outlook, financial condition, and business forecasts.
- The Company's actual operating results, financial condition, and business prospects may differ materially from those expressed or implied in these forward-looking statements. Such differences may arise from a variety of factors, including, but not limited to, market demand, price volatility, market competition, global macroeconomic conditions, supply chain dynamics, exchange rate fluctuations, and other risks and uncertainties beyond the Company's control.
- The forward-looking statements within this presentation reflect the Company's current views as of the date of publication. The Company undertakes no obligation to publicly update or revise any forward-looking statements, whether as a result of new information, future events, or otherwise.

Agenda

- Inergy Technology's Core Products and Recent Growth Trends
- Financial Performance and Highlight
- 2026 Strategic Roadmap

Company Overview

inergy Technology Inc.

Established November 2007

Capital Stock USD 15.5 Million

Chairman & CEO Dr. John Lin

Headquarters 8F-3, No.8, Taiyuan 2nd St., Zhubei City,
Hsinchu County, Taiwan

Shenzhen Office R1505-1508,Block A, Xinian Center,
No.6021 Shennan Rd, Shenzhen, China

inergy Technology is a fabless IC design company, dedicate in energy-efficiency technologies. Our major products are **Power MOSFET, BLDC Motor Driver, SoC Cooling Fan IC**. We provide innovative solutions and services in Motor, BMS, and Power Management fields.

Inergy Technology Inc. was founded in 2007, and officially listed on Taipei Exchange (Taipei Exchange, TPEX) in 2022, with the Taiwan OTC stock code 6693.TWO.



Core Values & Competitive Competences



Dedicated to energy efficiency technologies. Focus on Power MOSFET, and BLDC Motor Driver & SoC Cooling Fan IC. Integrating key technologies towards high performance, high reliability, intelligent system solutions.

Major Products

Power MOSFET

Low RDS(ON), Higher Current, High Efficiency Packages



BLDC Motor Drivers & SoC Cooling Fan ICs

Proprietary Motor Drive Technologies, Highly Integrated IC



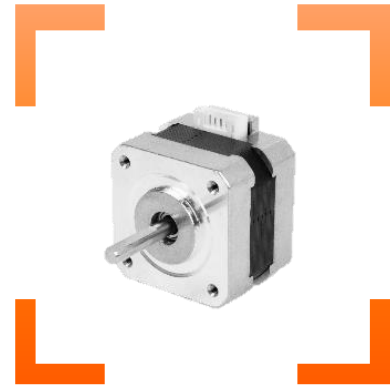
Power MOSFET

Featuring high-performance, low package resistance, and low capacitance, these Power MOSFET are versatile solutions for various fields.



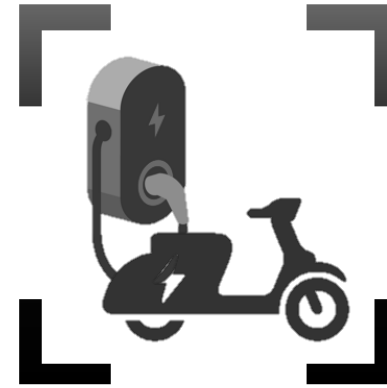
Datacenter/Server

Ultra-low RDS(ON), high current capability, and superior power density are perfect for datacenters and servers with strict Power Usage Effectiveness(PUE).



Motor Driving

High-performance and low-EMI, ideal for energy-saving motor driver facilities.



Battery Powered Application

Low power loss, high-reliability and superior thermal conductivity are optimized for electric vehicles and power tools.

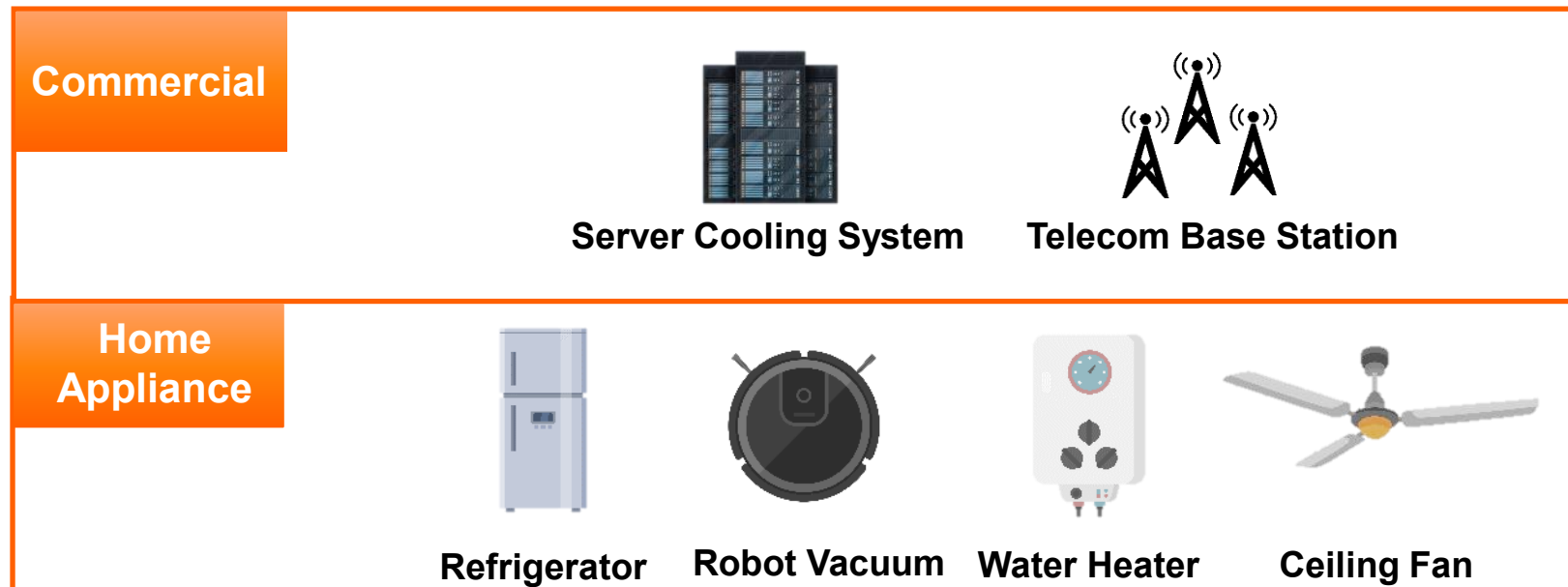


Energy Storage

High reliability and high energy efficiency, ideal for Battery Management Systems(BMS) and power optimizer in energy storage systems(ESS).

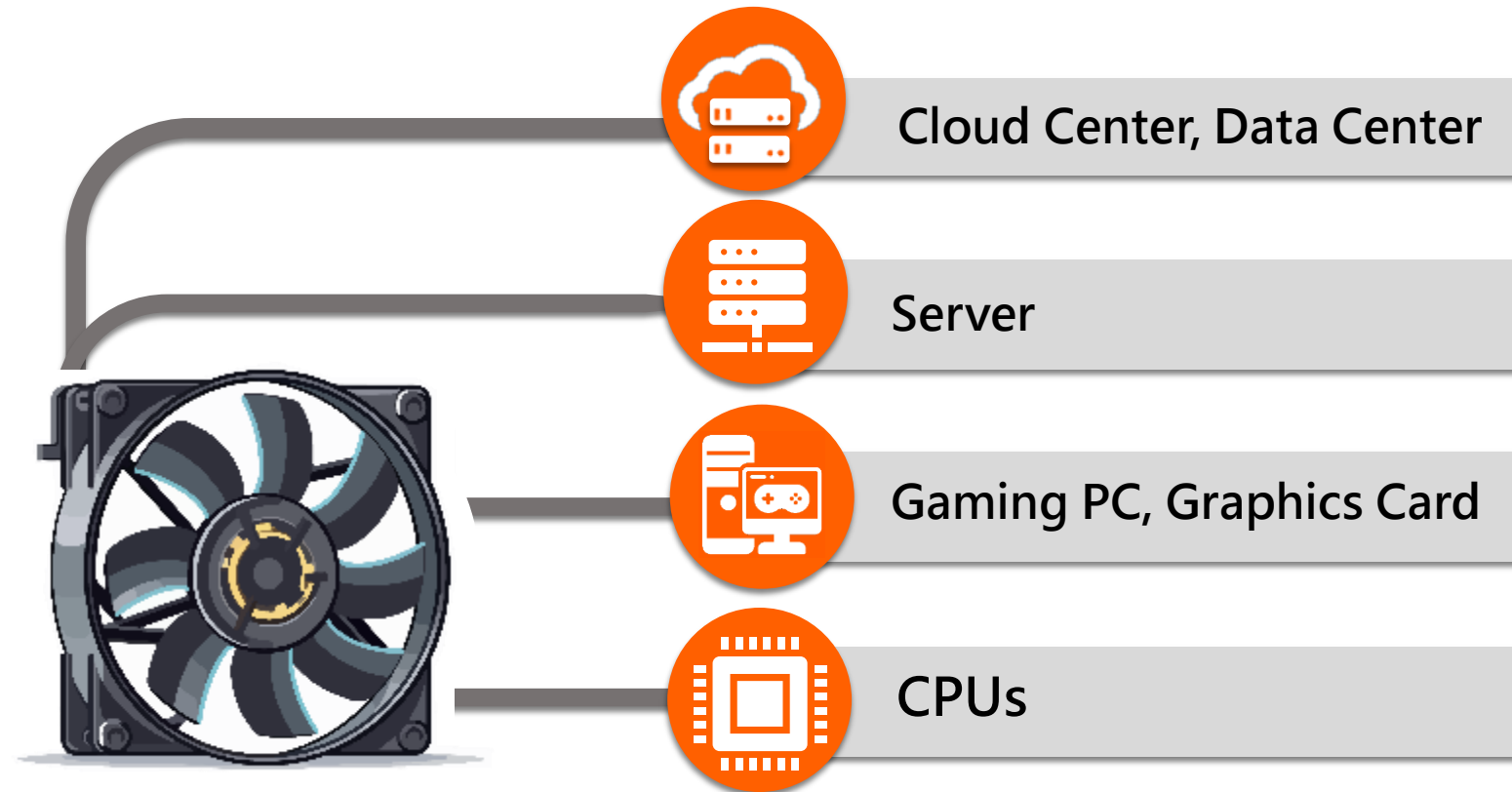
BLDC Motor Driver

- Proprietary motor driver technology with an easy-to-use platform for flexible parameter adjustment.
- Certified by major global brands with proven mass production success.

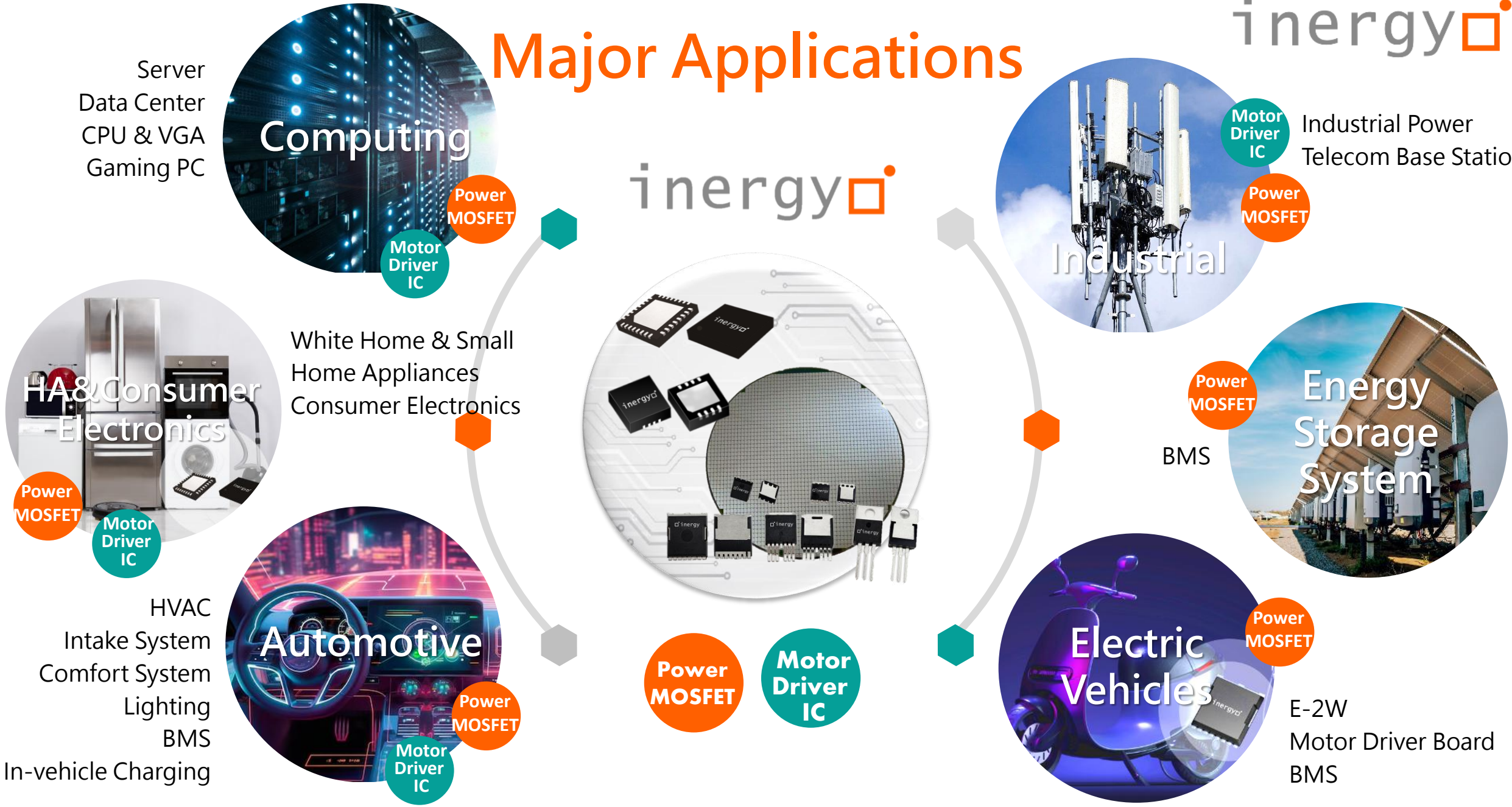


SoC Cooling Fan IC

- SoC Cooling Fan ICs deliver high efficiency for cooling systems.



Major Applications



Financial Performance and Highlight

Financial Performance

Consolidated Statements of Comprehensive Income

	Dec 31, 2025	Dec 31, 2024	YOY
Revenue	1,413,767	1,094,185	29%
Gross Profit	369,934	334,359	11%
Operating Expenses	305,473	213,525	43%
Operating Profit	64,461	120,834	-47%
Non-operating Income and Expenses	(72,063)	69,806	-203%
Profit Before Tax	(7,602)	190,640	-104%
Income Tax Expense	(3,606)	38,223	-109%
Net Income Attributable to Owners of the Parent	(3,996)	152,417	-103%
EPS (NTD)	(0.09)	3.33	-103%

Unit: NT\$ Thousand

Key Financial Ratios	2025	2024
Gross Margin	26%	31%
Operating Margin	5%	11%
Net Margin	-0.28%	14%

Financial Performance

Consolidated Balance Sheets

	Dec 31, 2025	Dec 31, 2024	YoY
Total Assets	1,677,327	1,805,954	-7%
Cash and Cash Equivalents	466,545	759,618	-39%
Notes and Accounts Receivable	278,726	205,892	35%
Inventories	345,009	280,991	23%
Property, Plant and Equipment	326,430	320,740	2%
Refundable Deposits / Other Financial Assets	153,368	152,316	1%
Total Liabilities	606,820	597,524	2%
Short-term Debt	45,000	74,516	-40%
Current Portion of Long-term Debt	15,079	14,780	2%
Notes and Accounts Payable	247,817	198,354	25%
Dividends Payable	-	-	
Long-term Debt	150,603	165,682	-9%
Guarantee Deposits Received	-	35,000	
Total Shareholders' Equity	1,070,507	1,208,430	-11%

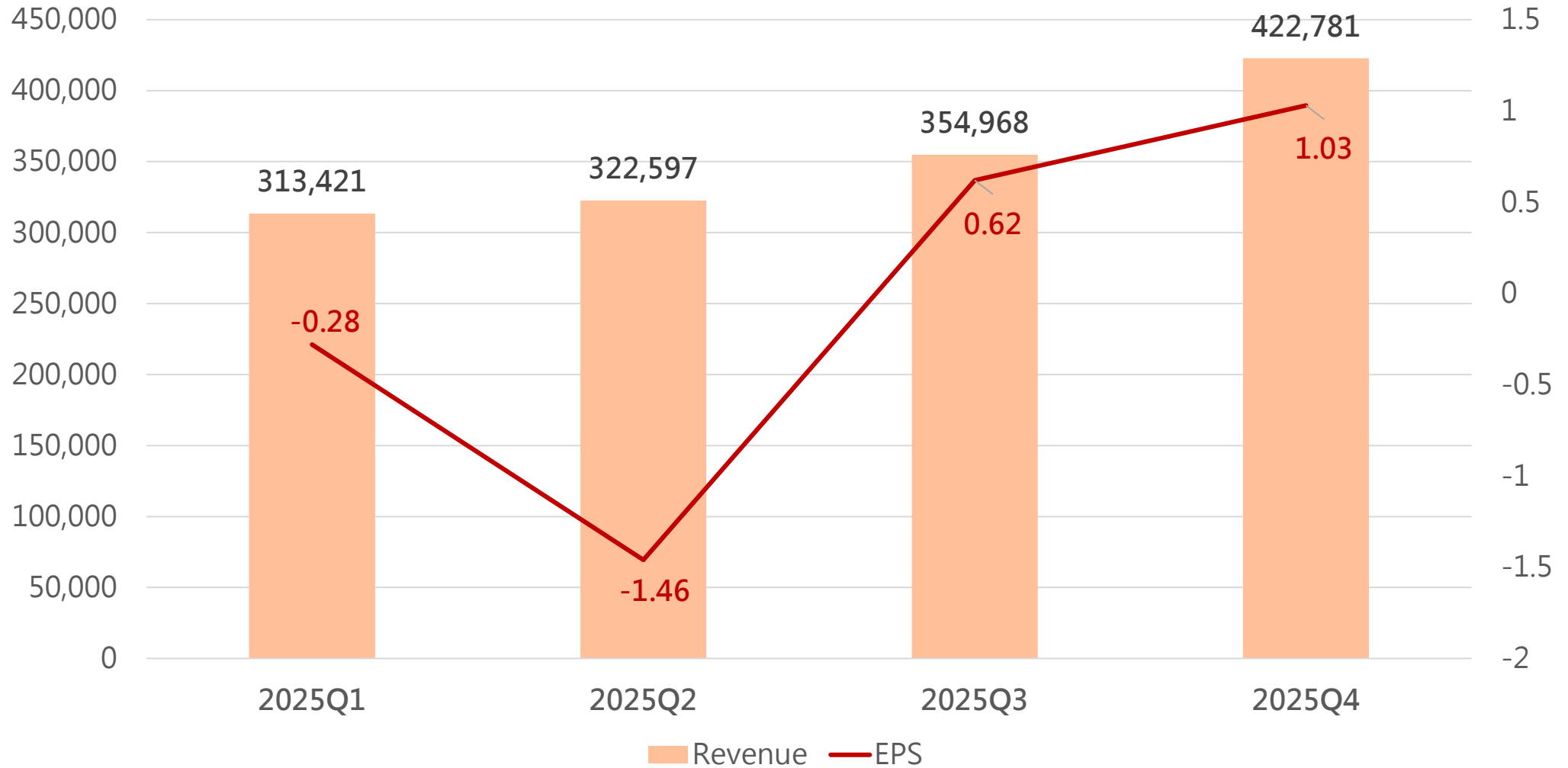
Key Financial Metrics	2025	2024
Days Sales Outstanding	62.60	55.64
Days Sales of Inventory	134.68	164.41
Days Payable Outstanding	77.99	68.87
Return on Equity (%)	-0.35%	13.21%
Return on Assets (%)	0.00%	9.38%
Debt Ratio (%)	36.18%	33.09%

Unit: NT\$ Thousand

Financial Performance **2025 Q1-Q4 Revenue & EPS**

Full-Year 2025 Revenue: NT\$1,413,767 thousand

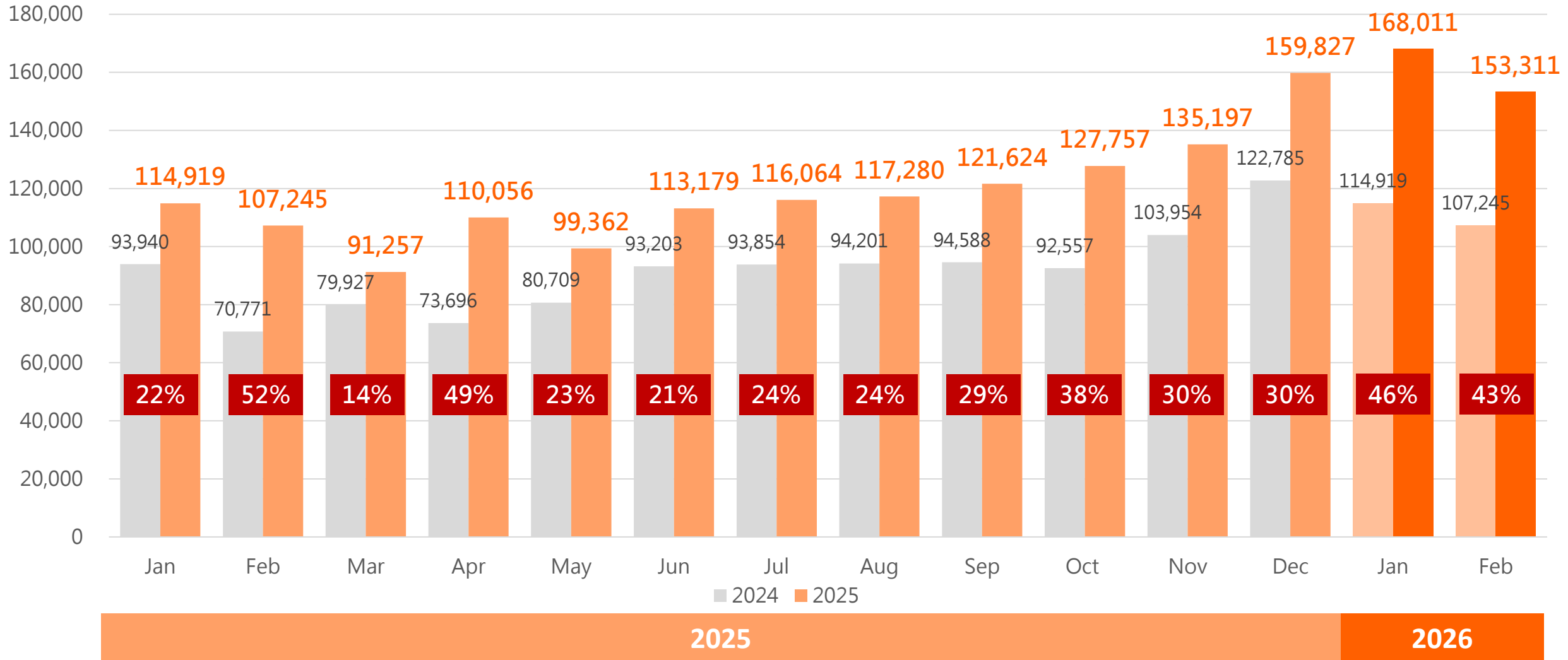
(Unit: NT\$ Thousand)



Financial Performance Revenue YoY Growth

Full-Year 2025 Revenue: NT\$1,413,767 thousand

(Unit: NT\$ Thousand)

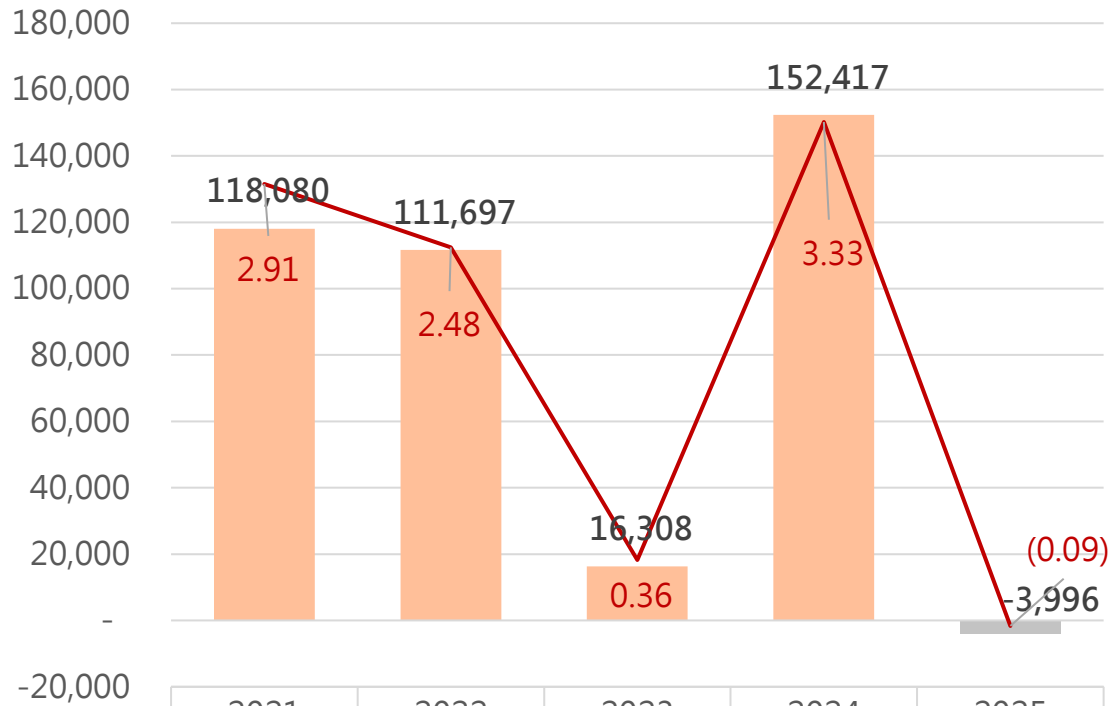


Financial Performance

2021-2025 Financial Performance: Net Income / EPS & Revenue / Gross Margin

Net Income & EPS

(Unit: NT\$ Thousand)

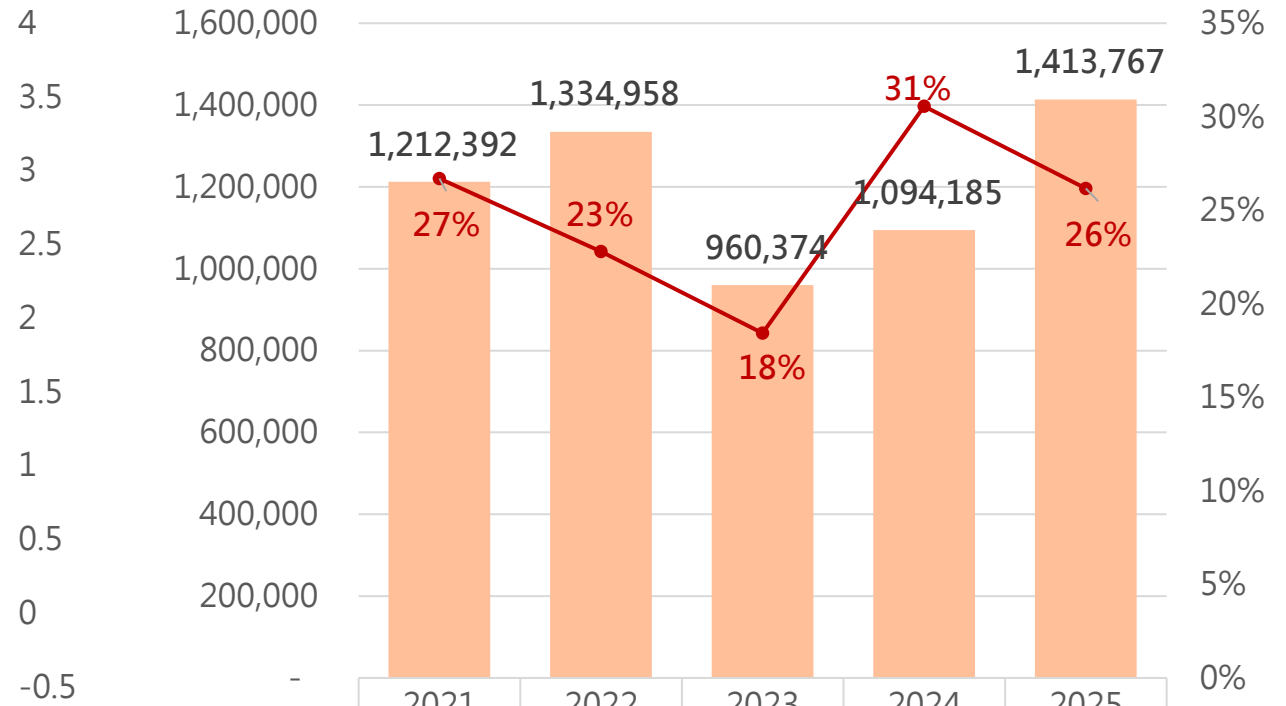


Net Income	118,080	111,697	16,308	152,417	-3,996
EPS(NTD)	2.91	2.48	0.36	3.33	(0.09)

Net Income EPS(NTD)

Revenue & Gross Margin

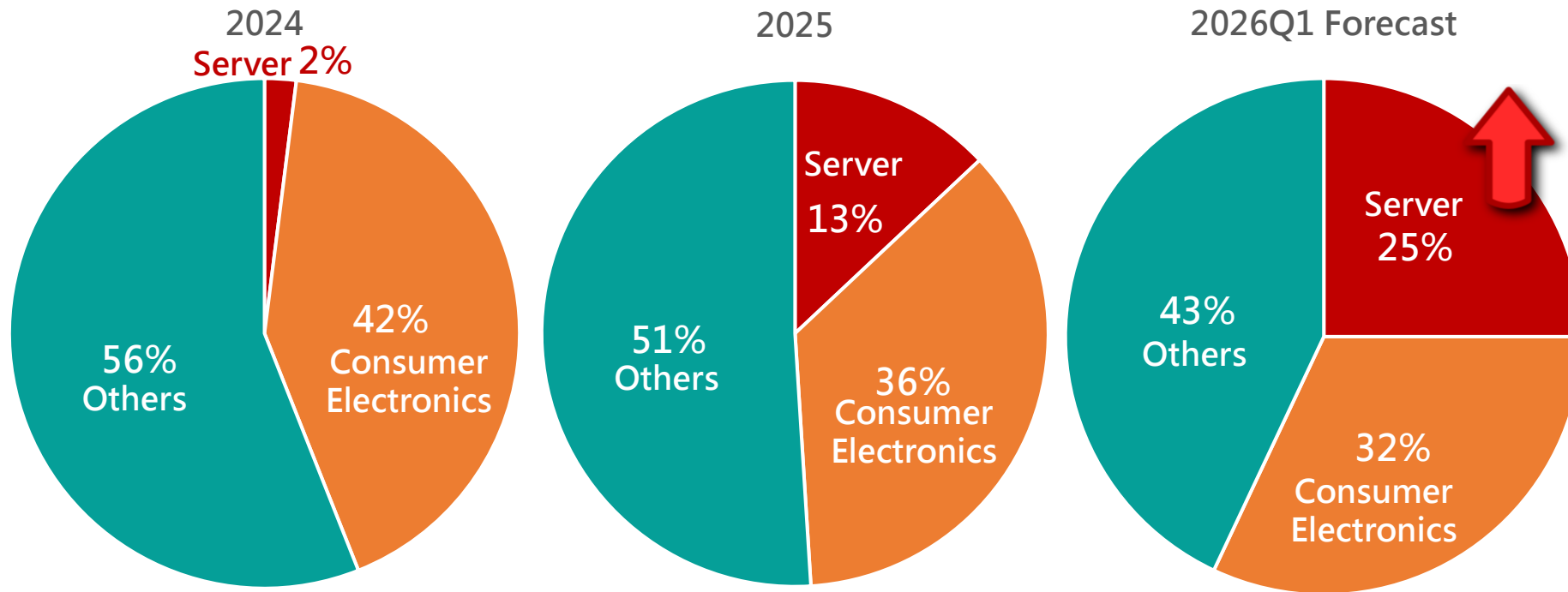
(Unit: NT\$ Thousand)



Revenue	1,212,39	1,334,95	960,374	1,094,18	1,413,76
Gross Margin	27%	23%	18%	31%	26%

Revenue Gross Margin

Breakdown by Major Applications



Server

- Datacenter
- Power System
- Cooling System

Consumer Electronics

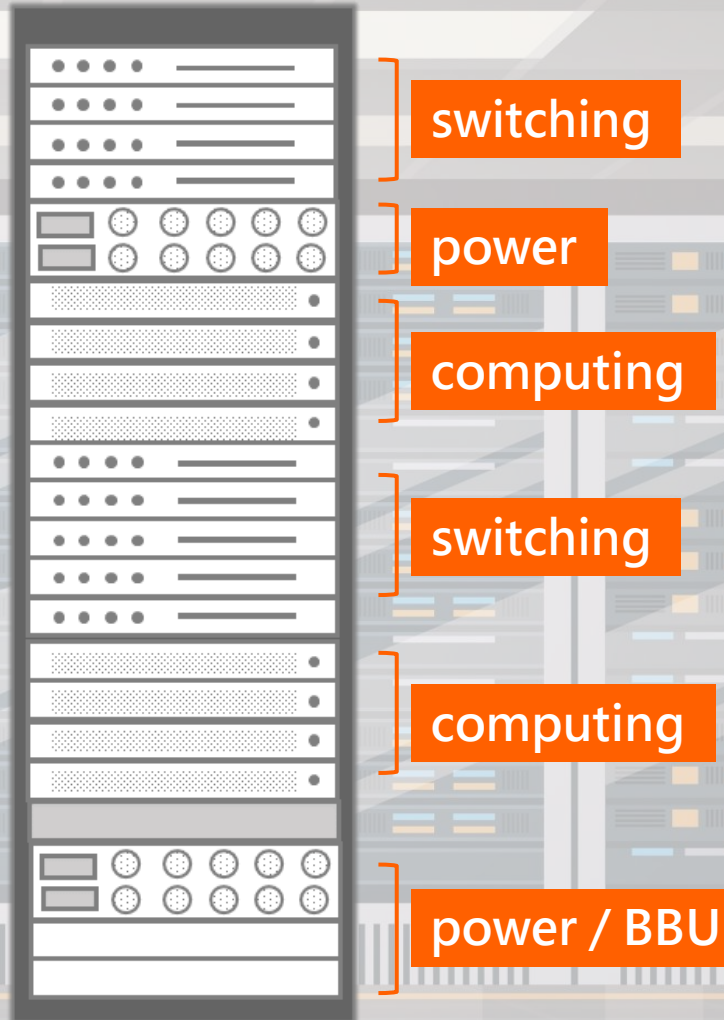
- White Home Appliances
- Small Home Appliances
- Consumers
- PC & NB

Others

- Electric Vehicle
- Energy Storage System
- Industrial
- Telecom
- Automotive

2026 Strategic Roadmap

Focus – Server/Datacenter



- Server Power System / Power MOSFET
- Server Power System / SiC Products
- Server Peripherals / SoC Cooling Fan IC
- Server 12V Air Cooling and Sidecar 48V Air Cooling / BLDC Motor Driver

Focus – Server/Datacenter - Cooling



SoC cooling fan IC for server peripherals



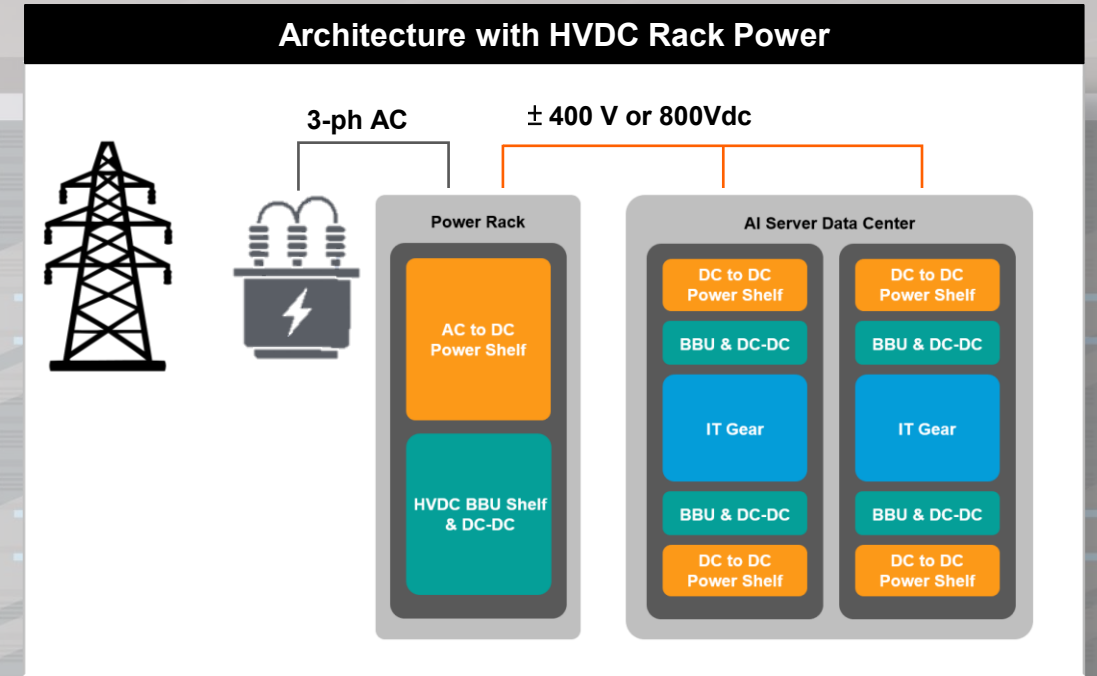
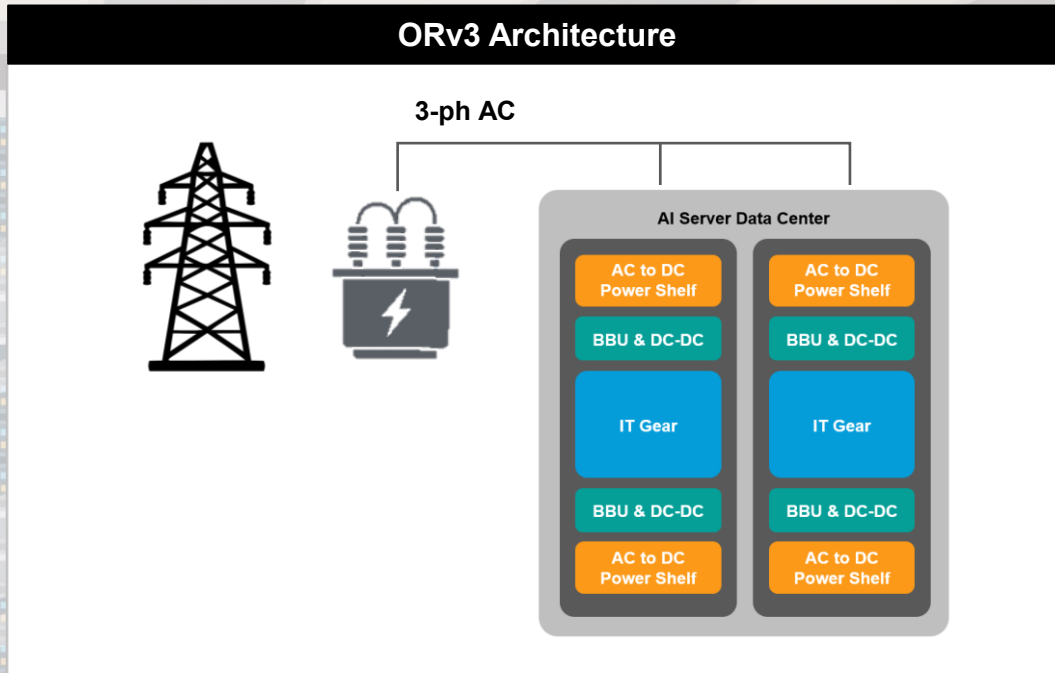
BLDC Motor Driver for server 12V air cooling



BLDC Motor Driver for sidecar 48V air cooling

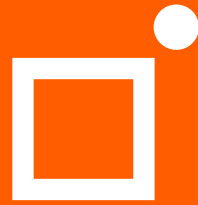
Focus – Server/Datacenter - Power

Power solutions are design-in High Power Rack



Generation	Power (Rack)	Input (IT Rack)	Busbar Voltage
ORv3 HPR (High Power Rack)	92kW ~200 kW	3-phase AC(480V)	50V dc
HVDC Diablo 400	800 kW+	HVDC (± 400 V or 800V)	± 400 V or 800Vdc

Resource : OCP



THANK YOU!